

LISTENING TO YOUR BEARINGS 24/7 CHANGES EVERYTHING



INDUSTRIES

MOST EASY, AFFORDABLE & OPEN

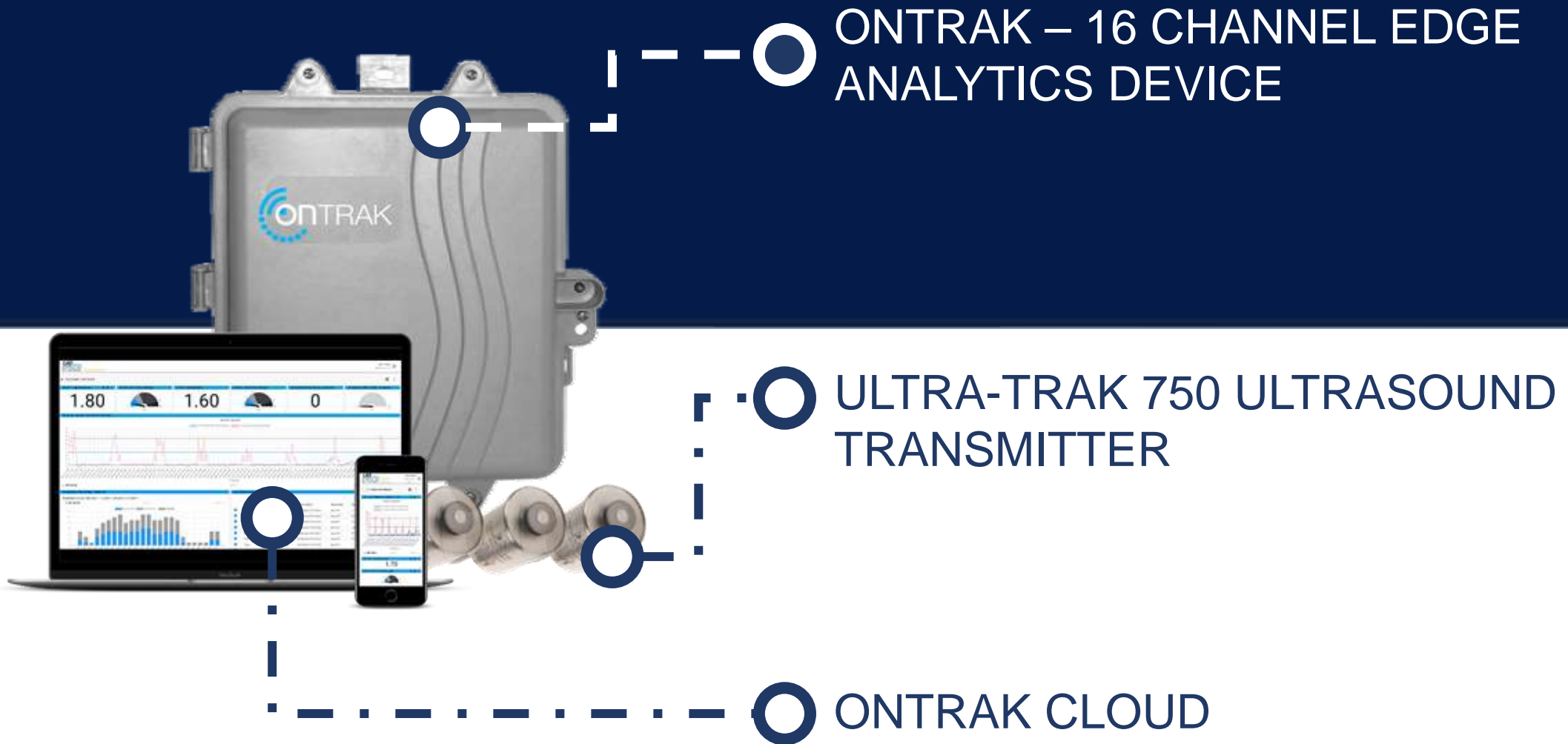
ONLINE BEARING LUBRICATION & HEALTH MONITORING SYSTEM





THE ONTRAK IS A 16 CHANNEL IIOT
EDGE ANALYTIC DEVICE DESIGNED
TO DELIVER THE EARLIEST
WARNING OF BEARING FAILURE
AND LUBRICATION ISSUES,
REMOTELY.

OVERVIEW



INTEGRATE TO CLOUD & ON-PREMISES APPLICATIONS

(MODBUS, AWS, AZURE,
GOOGLE CLOUD)

COMMUNICATION (ETHERNET, WI-FI OR CELLULAR)

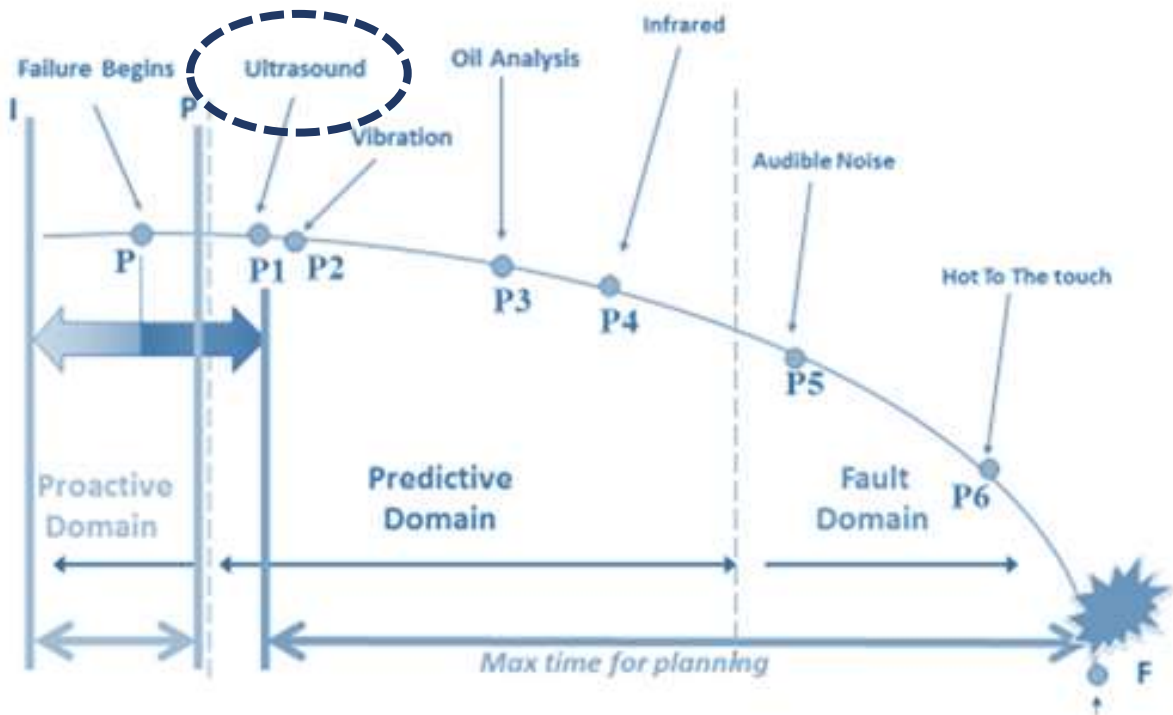
MODULAR SYSTEM
EACH ON-TRAK IS
CAPABLE OF 16 SENSOR.
EASILY SCALE ON-TRAK
SYSTEMS TO
THOUSANDS OF
SENSORS TO ONE
CENTRAL DASHBOARD

MOBILE VIEW
VIEWABLE ON ANY
NETWORK CONNECTED
DEVICE; PC, LAPTOP,
TABLET, PHONE USING A
STANDARD BROWSER.

ALARM NOTIFICATION
BUILT-IN EVENTS SYSTEM
WHICH IS CONFIGURABLE,
AND HAS THE ABILITY TO
DISPLAY, EMAIL, TEXT ANY
ALERTS THE SYSTEM HAS.



THE POWER OF ULTRASOUND



*“ULTRASONIC MONITORING OF BEARINGS PROVIDES THE EARLIEST WARNING OF BEARING FAILURE. AN INCREASE IN AMPLITUDE OF A MONITORED ULTRASONIC FREQUENCY OF 12 DECIBELS OVER BASELINE WOULD INDICATE THE INITIAL (INCIPIENT) STAGES OF BEARING FAILURE. THIS CHANGE IS **DETECTED LONG BEFORE IT IS INDICATED BY CHANGES IN VIBRATION OR TEMPERATURE.**”*

MONITOR AND TREND DECIBEL LEVELS IN A BEARING WITH ULTRASOUND

8dB

**ABOVE BASELINE
INDICATES A LACK OF
LUBRICATION.**

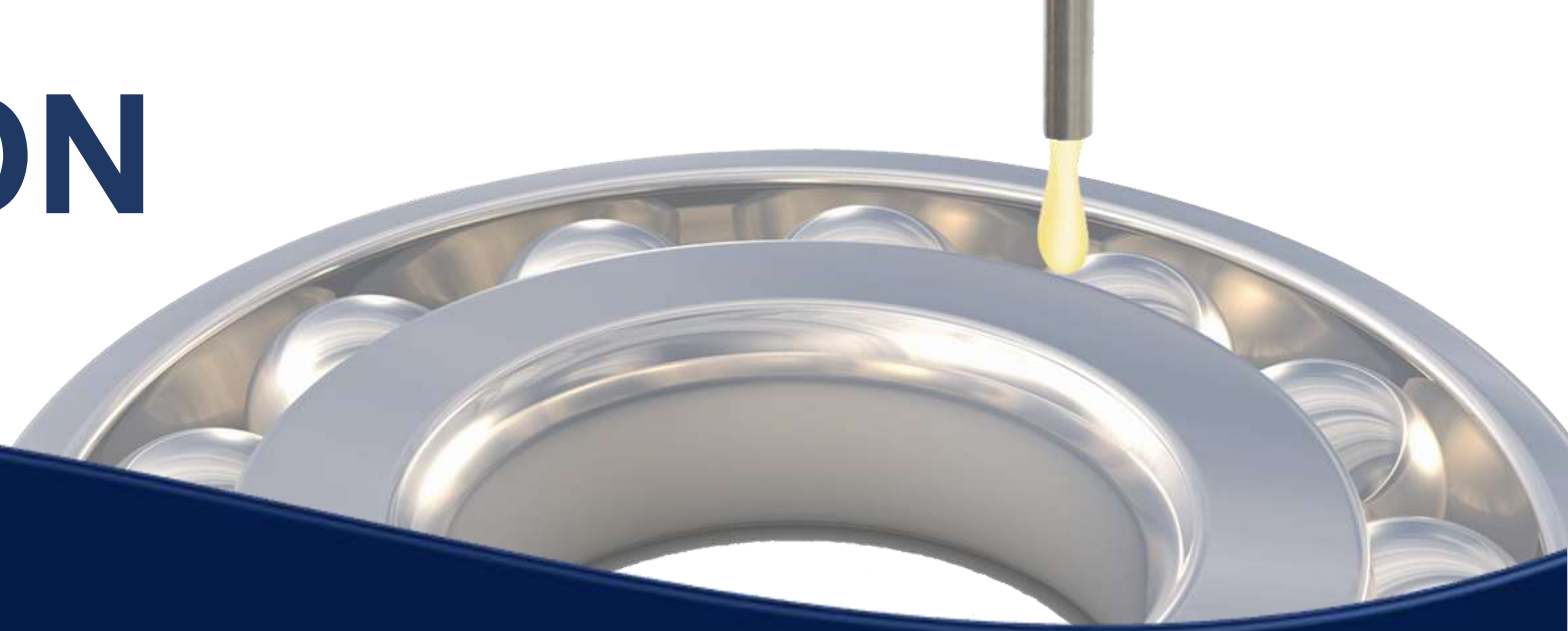
16dB

**ABOVE BASELINE
INDICATES DAMAGE TO
THE BEARING – A FAILURE
MODE BEYOND
LUBRICATION ALONE..**

35dB

**ABOVE BASELINE
MEANS THE ASSET IS
CRITICAL – IT IS CLOSE
TO FAILURE.**

ULTRASOUND GUIDED LUBRICATION



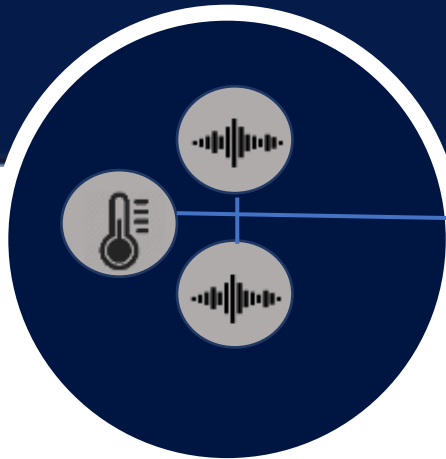
AS THE OPERATOR ADDS GREASE, HE OR SHE WILL NOTICE A GRADUAL DROP IN DECIBELS. ONCE THE LEVEL FALLS BACK TO THE BASELINE, **THE BEARING IS SUFFICIENTLY LUBRICATED.**



- **ELIMINATE PREMATURE BEARING FAILURE THROUGH ULTRASOUND GUIDED LUBRICATION**
- **REDUCE RESOURCE REQUIREMENTS TO TAKE MANUAL ROUTE DATA**
- **PROVIDE THE EARLIEST WARNING OF BEARING FAILURE.**

ONLINE BEARING MONITORING MADE EASY & AFFORDABLE!

ULTRA-TRAK™ 750 & OTHER SENSORS



CONNECT THE ULTRA-TRAK 750 & OTHER SENSORS.

ONTRAK™ IIoT SYSTEM



PRECONFIGURED WITH 16 CHANNELS. CONNECT TO THE ON-TRAK CLOUD OR OTHER APPLICATIONS WITH WI-FI, CELL OR ETHERNET

ETHERNET
WI-FI
CELLULAR

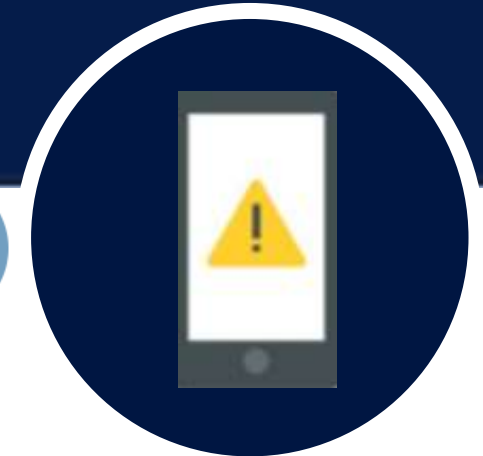


REAL-TIME DASHBOARD



VIEW SENSOR DATA ON ANY LAPTOP, TABLET AND PHONE. USE REAL-TIME INSIGHTS TO MONITOR LUBRICATION & CONDITION INSIGHTS.

REAL-TIME ALERTS



GET TEXT AND EMAIL ALERTS BASED ON ANY CRITERIA YOU CHOOSE.

DATA INPUT

HARDWIRED
SENSORS (16
CHANNELS)



BLUETOOTH LOW
ENERGY WIRELESS
SENSORS
(OPTIONAL)



WIFI WIRELESS
SENSORS
(OPTIONAL)



DATA OUTPUT



CLOUD PLATFORMS
(AZURE, AWS, GOOGLE,
IBM WATSON, PTC
THINGWORX)



ONTRAK CLOUD



ULTRATREND DMS



ON-PREMISE DATABASE,
SCADA, HISTORIANS,
ERP, CMMS. (OPTIONAL)



**WITH SNAP-TOGETHER BLOCKS,
THE ONTRAK MAKES IT SIMPLE TO
ADD CONNECTIVITY OPTIONS
EITHER AT THE INITIAL DESIGN OR
FUTURE-PROOF YOUR
INVESTMENT AS TECHNOLOGIES
CHANGE – JUST SNAP OUT THE
OLD AND SNAP IN THE NEW**

COMMUNICATION OPTIONS:



ETHERNET

USING YOUR PLANT NETWORK, THE ON-TRAK COMMUNICATES TO THE CLOUD OR OTHER APPLICATIONS.

WI-FI

IF YOUR PLANT HAS A RELIABLE WI-FI SIGNAL, THE ON-TRAK CAN COMMUNICATE USING THIS FEATURE. THIS METHOD ELIMINATED THE NEED FOR A HARD WIRED CONNECTION.

CELLULAR

ELIMINATING THE REQUIREMENT FOR A CONNECTION INTO THE EXISTING PLANT NETWORK, CELLULAR IS A COMMON OPTION TO ELIMINATE NETWORK TRAFFIC AND SECURITY ISSUES.

ULTRA-TRAK 750

THE ULTRA-TRAK 750 IS A
CONTINUOUSLY OPERATING
ULTRASOUND SENSOR AND
TRANSMITTER IN ONE.

READY TO GUARD AGAINST
UNPLANNED DOWNTIME
AND PRODUCT LOSS THE
MINUTE IT IS INSTALLED, THE
ULTRA-TRAK PASSIVELY
MONITORS ULTRASOUNDS
PRODUCED BY MECHANICAL
EQUIPMENT IN REAL-TIME





ULTRA-TRAK 750

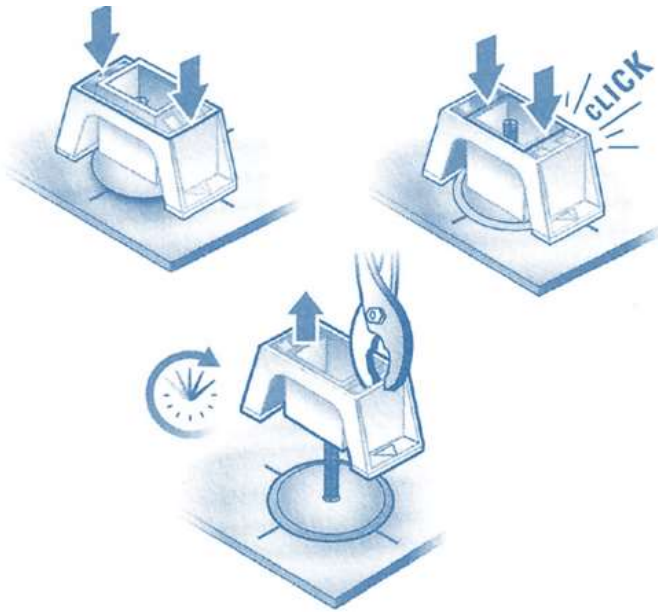
FEATURES

- ONE SENSORS COVERS AN ENTIRE BEARING, NO NEED FOR ADDITIONAL SENSORS ON DIFFERENT AXIS.
- CONTINUOUSLY MONITORS MACHINERY IN REAL-TIME
- DETECTS MECHANICAL FAULTS AND PROVIDES EARLY WARNING OF BEARING AND GEAR FAULTS.
- PREVENTS LUBRICATION ISSUES WITH THE DETECTION OF LACK OF LUBRICATION AND PREVENTS OVER-LUBRICATION.



STUD MOUNTING

THE ULTRA-TRAK 750



 **15 MINUTES**

- PREPARE THE MOUNTING SURFACE
- MIX THE EPOXY INCLUDED WITH THE KIT AND APPLY
- PRESS THE MOUNTING KIT UNTIL IT CLICKS
- WAIT 10 -15 MINUTES
- REMOVE THE PLASTIC MOUNTING KIT FROM THE STUD



**OPTIONAL THERMO ISOLATION
DEVICE FOR HIGH TEMPERATURE
APPLICATIONS**

ADD OTHER

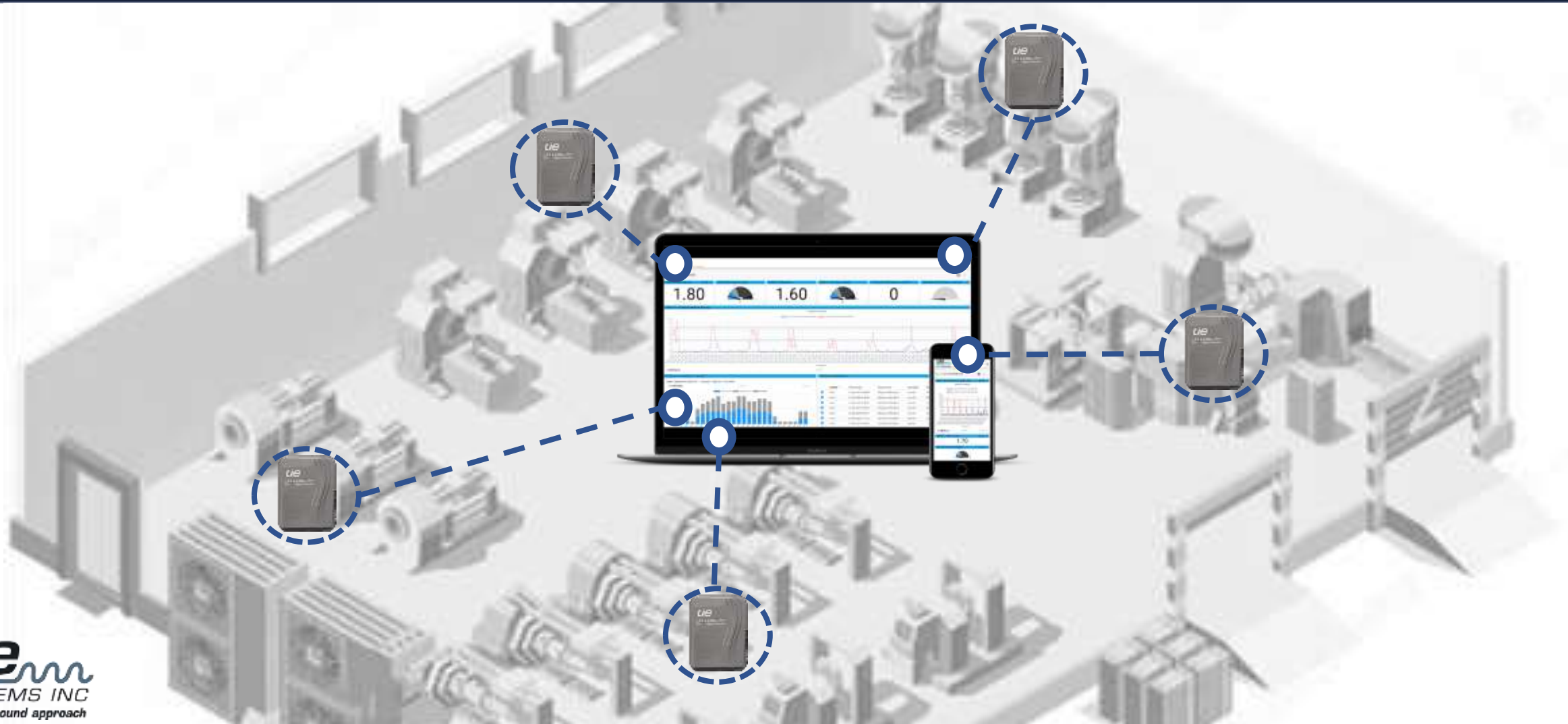
SENSING TECHNOLOGIES

THE ON-TRAK SYSTEM IS COMPATIBLE WITH MOST ANALOG SENSORS AND TRANSMITTERS.

ADD ADDITIONAL SENSING TECHNOLOGY TO THE ON-TRAK SYSTEM TO COMPLIMENT THE ULTRASOUND READING.

- TEMPERATURE
- PRESSURE
- VIBRATION
- RPM
- OTHERS

ONTRAK REQUIRES FEWER CABLES AND INSTALLATION TIME THAN TRADITIONAL CONDITION MONITORING SYSTEMS.



PRE-BUILT, CONFIGURABLE DASHBOARDS



USE ONTRAK CLOUD DEVICE MANAGEMENT TO SEE THE STATUS OF ALL YOUR CONNECTED SYSTEMS AND REMOTELY DEPLOY CHANGES.

ALL DATA SENT TO THE ONTRAK CLOUD DASHBOARD IS TIMESTAMPED AND SAVED IN A DATABASE FOR VIEWING IMMEDIATELY, GENERATING REPORTS, AND EXPORTING TO CSV FILES FOR IMPORTING TO SPREADSHEETS.

SELECT FROM A MENU OF VISUALIZATION WIDGETS (FOR EXAMPLE, SINGLE VALUE, LINE CHARTS, TABLES).

LIMITLESS DASHBOARDS

○ CREATE UNLIMITED
NUMBER OF
DASHBOARDS
USING DRAG AND
DROP WIDGETS TO
BEST PROVIDE
REAL-TIME INSIGHTS



PRESCRIPTIVE

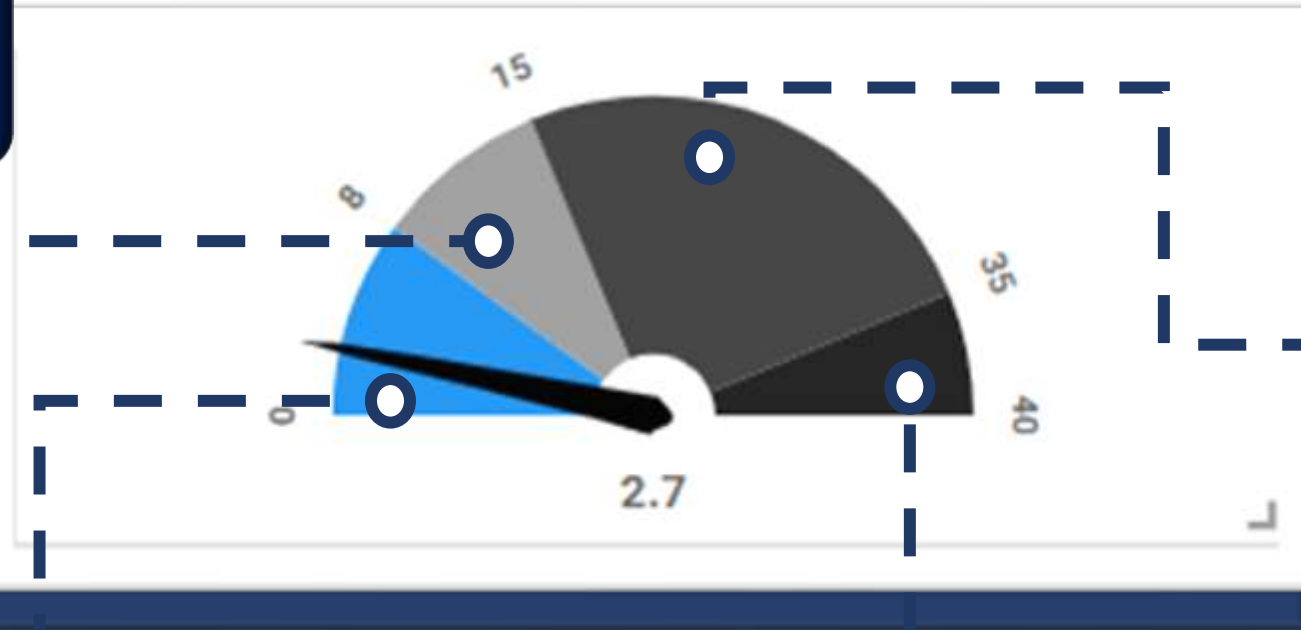
LUBRICATION AND HEALTH INSIGHTS

LUBRICATION REQUIRED

8dB above baseline
indicates a **lack of
lubrication.**

HEALTHY BEARING

Do Nothing!



BEGINNING OF FAILURE

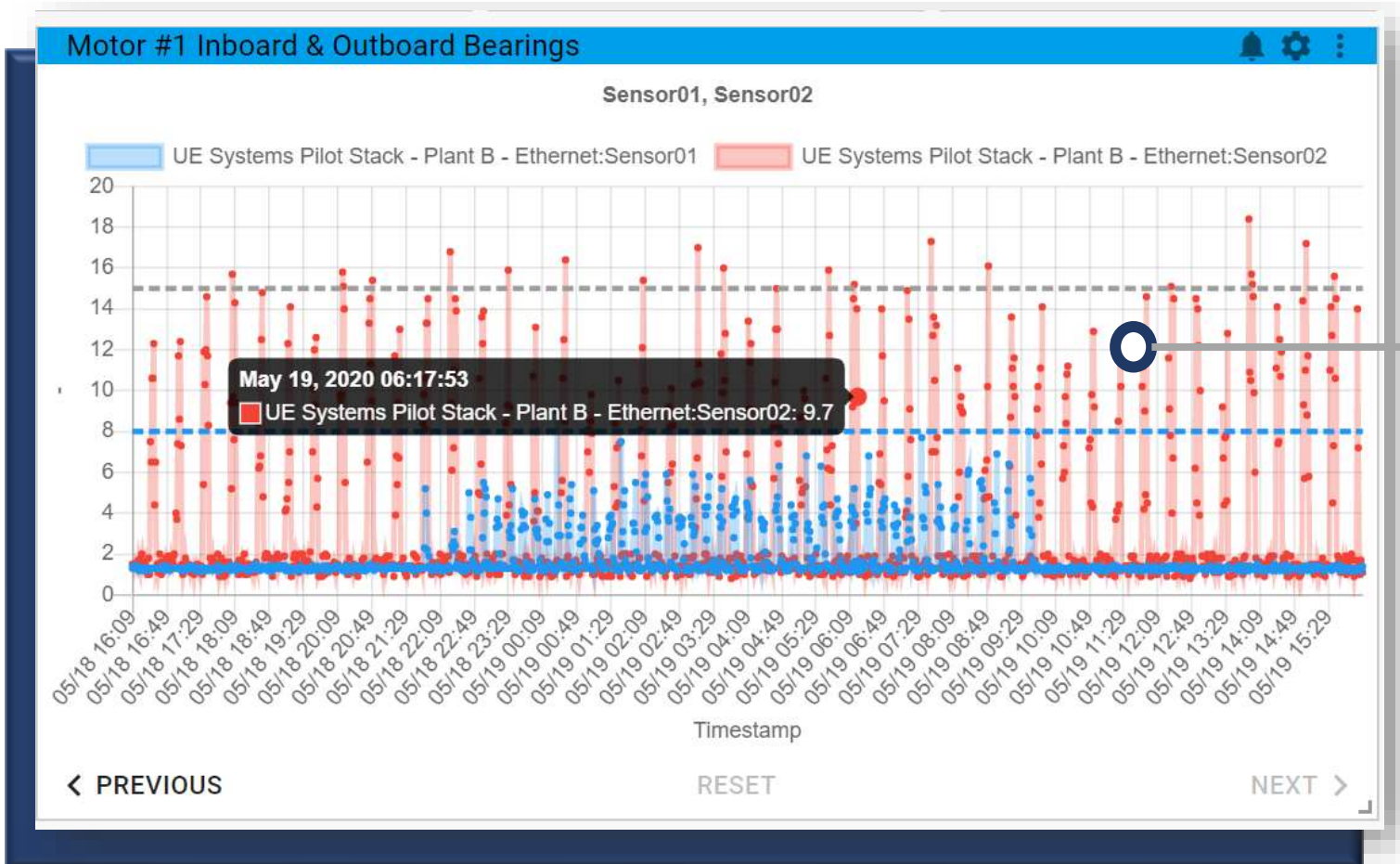
16dB above baseline
indicates damage to the
bearing – a **failure
mode beyond
lubrication alone.**

CLOSE TO FAILURE

35dB above baseline
means the asset is
critical – **it is close
to failure.**

VIEW BOTH

REAL-TIME AND HISTORICAL TRENDS



Dashboard supports real-time trending as well as historical trending proving a time stamp and value for each measurement.

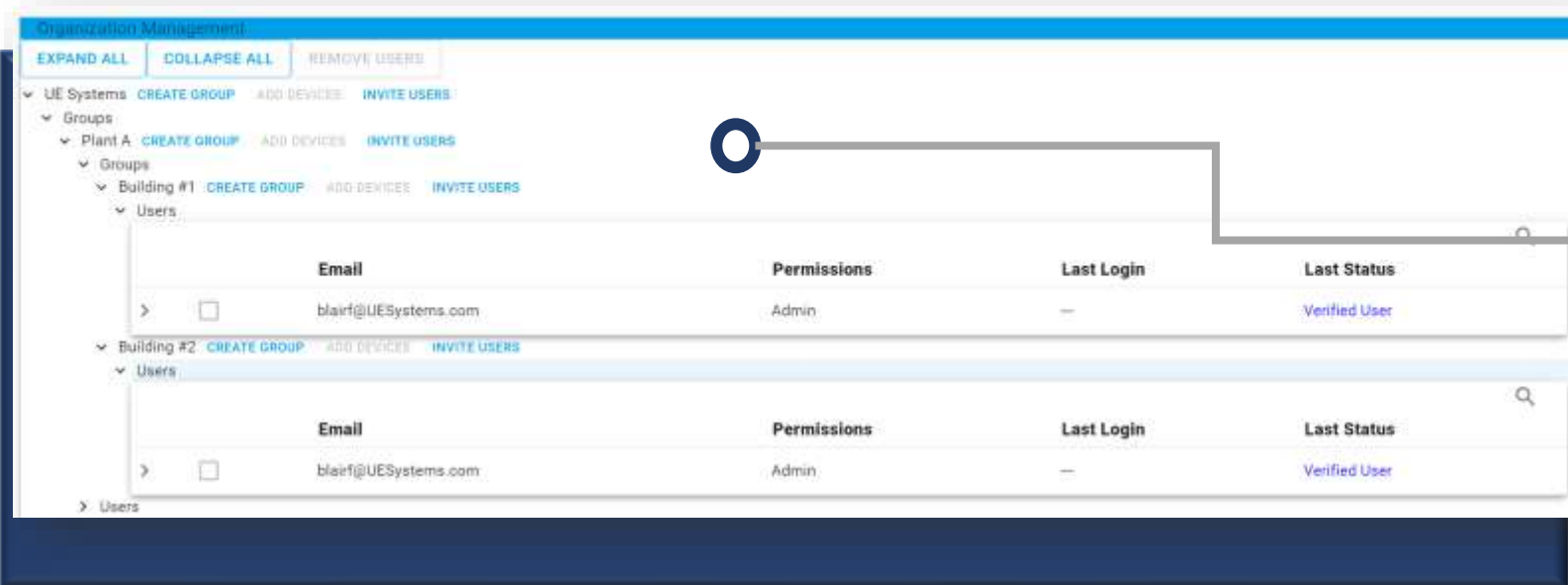
DEFAULT AND CUSTOMIZABLE CONDITIONAL ALERTS

The screenshot displays the 'Modify Alerts' interface for 'UE Systems Pilot Stack'. It shows two alert configurations. The first configuration is for 'Sensor01' with a condition of 'Greater than or equal to' and a trigger value of '2'. It includes options for 'Email Alerts' (checked), 'Alert Limit' (Once per 1 minute), and 'Enable' (checked). A 'DELETE ALERT' button is visible. The second configuration is for 'Sensor02' with a condition of 'Less than' and a trigger value of '10'. An 'Alert Details' pop-up window is overlaid on the second configuration, showing the following information:

Alert Details
Event Type: Email
Timestamp: 17 Jun 2020 08:56:38
ONTRAK: ONTRAK - Toronto - Plant B - Ethernet
Alert Description: Lubrication Required
Tag Name: sensor02
Tag Value: 11.8
Alert Condition: Less than 10
Sent to:
Subject: ALARM: Interstacks notification
You are receiving this email because your Interstacks Device ONTRAK - Toronto - Plant B - Ethernet in Toronto, Canada has entered the ALARM state, because sensor tag sensor02 was less than threshold value 10 at Wednesday 17 June, 2020 12:56:38 UTC.

Text and email alerts can be sent based on criteria you select. Pre-built alerts for lubrication, early onset of failure and critical failure come standard.

MANAGE ALL YOUR DEVICES AND USERS FROM ONE INTERFACE.



Admin users create sub-groups in an arbitrarily deeply nested hierarchy representing your existing organization.

STARTER KIT



- ONTRAK SYSTEM (AVAILABLE WITH CELL, WI-FI OR ETHERNET CONNECTION.)
- UP TO 16 X ULTRA-TRAK 750 SENSORS
- PRE-CONFIGURED FROM FACTORY WITH YOUR SPECIFICATIONS.
- PRE-BUILT DASHBOARDS AND ALERT CATEGORIES
- 1 YEAR OF ONTRAK CLOUD
- TECHNICAL SUPPORT & REMOTE EXPERT DIAGNOSTICS

ONTRAK SMARTSTART PROGRAM™

UE SYSTEMS IS FOCUSED ON ENABLING OUR CUSTOMERS TO OPTIMIZE THEIR ONLINE MONITORING SOLUTION ADOPTION AND GROWTH. FROM GETTING YOUR FIRST SYSTEM RUNNING TO HELPING YOU EXPAND THE SOLUTION ACROSS YOUR ORGANIZATION. WE ARE COMMITTED TO ENSURING YOUR SUCCESS.

THIS IS WHY WE'VE DESIGNED OUR CUSTOMER SUCCESS PROGRAM AROUND FOUR CORE PILLARS.

- **HARDWARE INSTALLATION SUPPORT**
- **SOFTWARE INSTALLATION SUPPORT**
- **DATA & ALERT CONFIGURATION/OPTIMIZATION**
- **TRAINING & TROUBLESHOOTING**

ONTRAK

IIOT EDGE ANALYTIC DEVICE

DESIGNED TO REMOTELY MONITOR YOUR
BEARINGS AND LUBRICATION CONDITION 24/7.



- **ELIMINATE PREMATURE BEARING FAILURE THROUGH ULTRASOUND GUIDED LUBRICATION**
- **REDUCE MANPOWER REQUIREMENTS TO TAKE MANUAL ROUTE DATA**
- **PROVIDE THE EARLIEST WARNING OF BEARING FAILURE.**