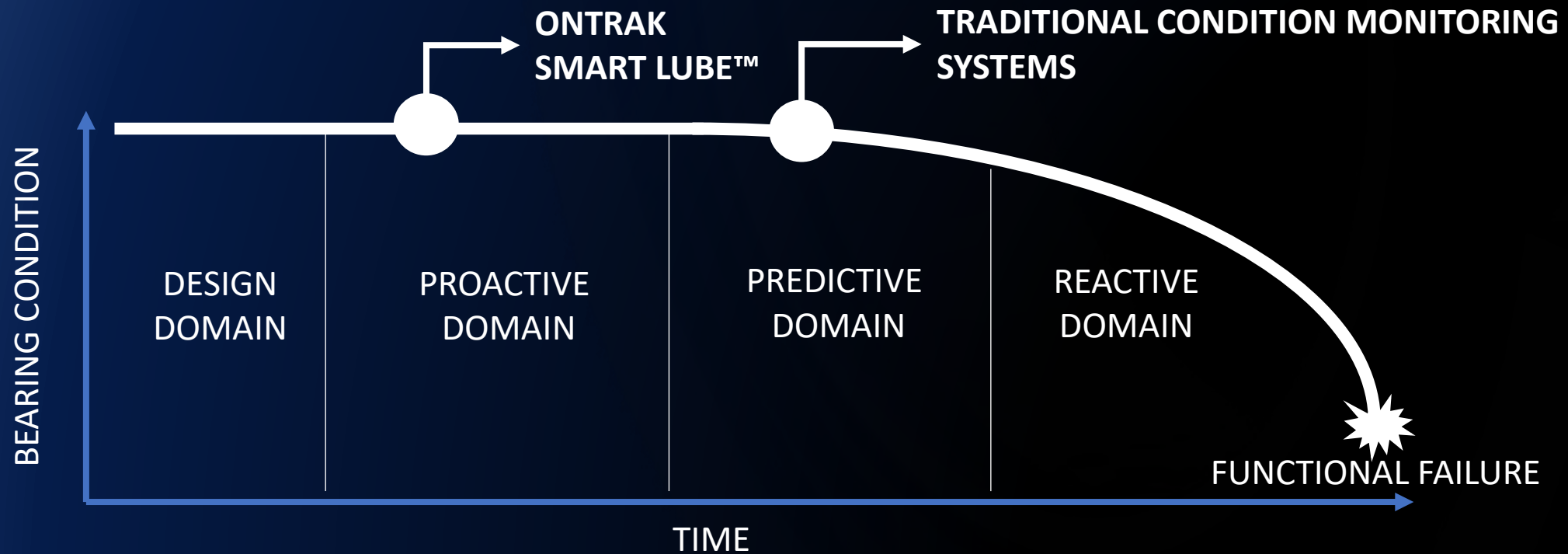


SIMPLIFYING ONLINE BEARING LUBRICATION AND HEALTH MONITORING



STOP MONITORING YOUR BEARINGS AND START MANAGING THEM!

With the OnTrak Smart Lube™ you can **manage** the life of your bearings by reducing the largest cause of premature bearing failure, improper lubrication.





WHEN BEARINGS FAIL PREMATURELY,
POOR LUBRICATION PRACTICES ARE
OFTEN THE CAUSE

In fact, over

80%

of premature bearing failures can
be traced to a problem with
lubrication.



THE ONTRAK SMART LUBE™ IS A REMOTE BEARING LUBRICATION AND MONITORING SYSTEM DESIGNED TO PROVIDE LUBRICATION CERTAINTY.

DESIGNED TO IDENTIFY WHEN AND HOW MUCH LUBRICATION IS REQUIRED AND REMOTELY DISPENSE GREASE WITH PRECISION ANYWHERE IN THE WORLD.

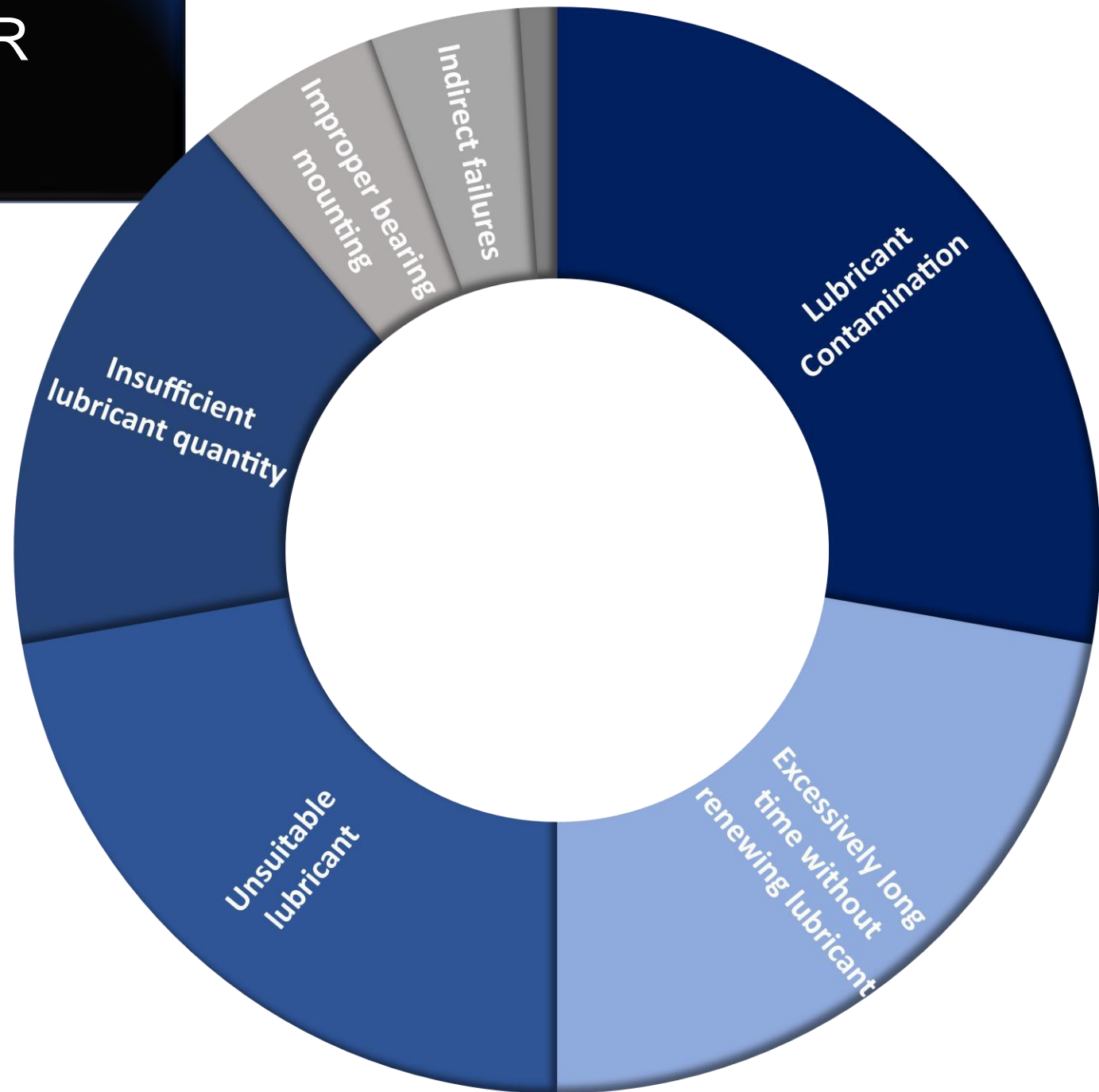


BEARING LUBRICATION CERTAINTY

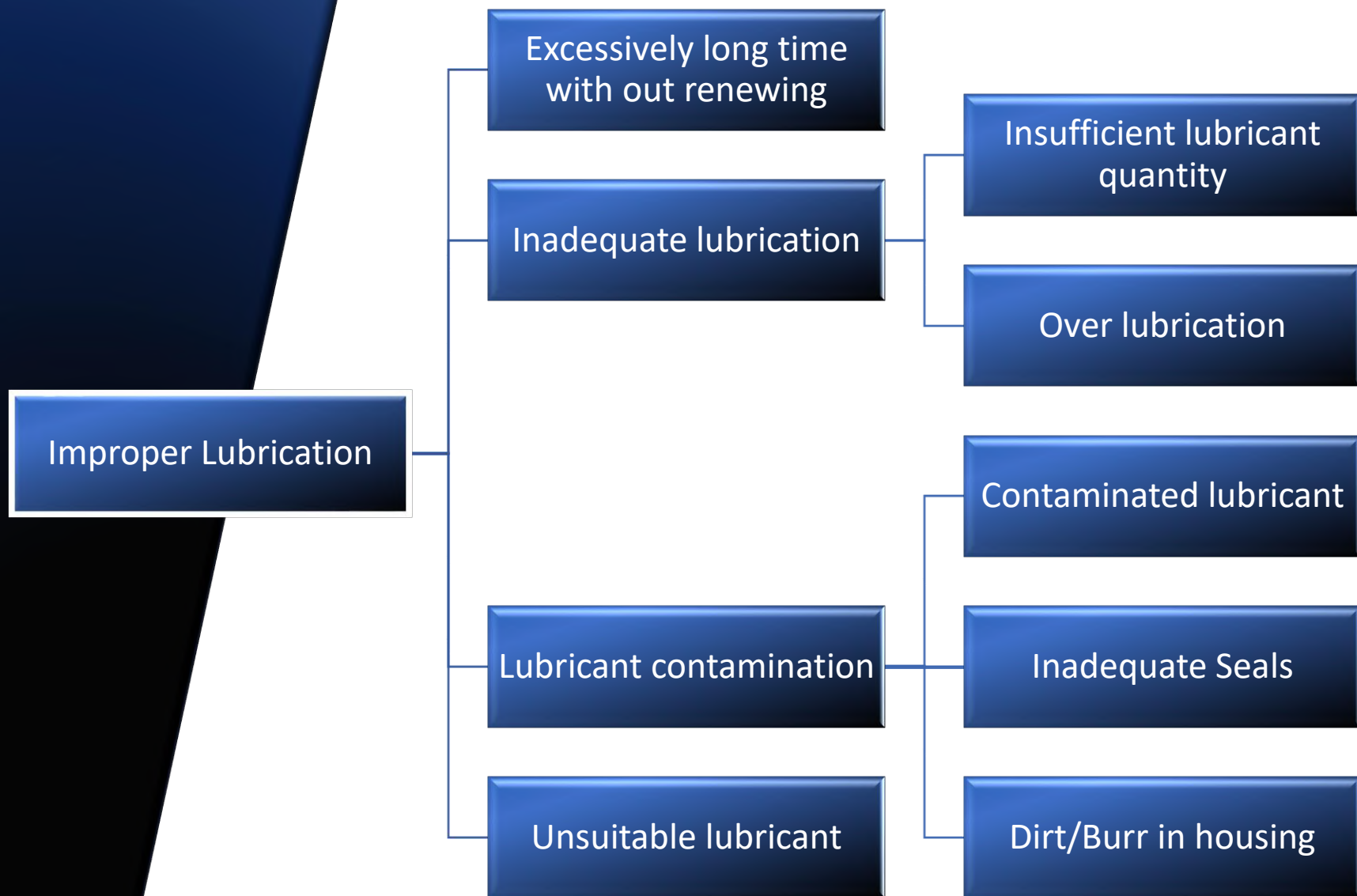
- **KNOW PRECISELY WHEN LUBRICATION IS REQUIRED**
- **KNOW EXACTLY HOW MUCH LUBRICATION IS REQUIRED**
- **LUBRICATE USING THE CORRECT GREASE EVERY TIME**
- **ELIMINATE THE POTENTIAL FOR FOREIGN MATERIAL TO BE INTRODUCED WHILE LUBRICATING**
- **REDUCE INSPECTION AND LUBRICATION RESOURCE REQUIREMENTS**

BEARING FAILURES AND THEIR CAUSES

According to research, less than **1 percent** of rolling bearings reach their expected life.



Up to 80% of premature bearing failures can be traced back to improper lubrication!



IDENTIFY

WHICH LUBRICATION IS REQUIRED



Unsuitable lubricant

Choosing the right lubricant is one of the critical factors to optimal bearing life. Each unit has specific lubricant for the specific application. No accidental mixing of greases.

WHEN LUBRICATION IS REQUIRED

Inadequate lubrication

As the lubrication level in a bearing falls or deteriorates, the potential for friction increases. There will be a corresponding rise in the ultrasound amplitude level that can be noted.

MONITOR AND TREND DECIBEL LEVELS IN A BEARING WITH ULTRASOUND

8dB

**ABOVE BASELINE
INDICATES A LACK
OF LUBRICATION.**

PRESCRIPTIVE LUBRICATION AND HEALTH INSIGHTS

LUBRICATION
REQUIRED

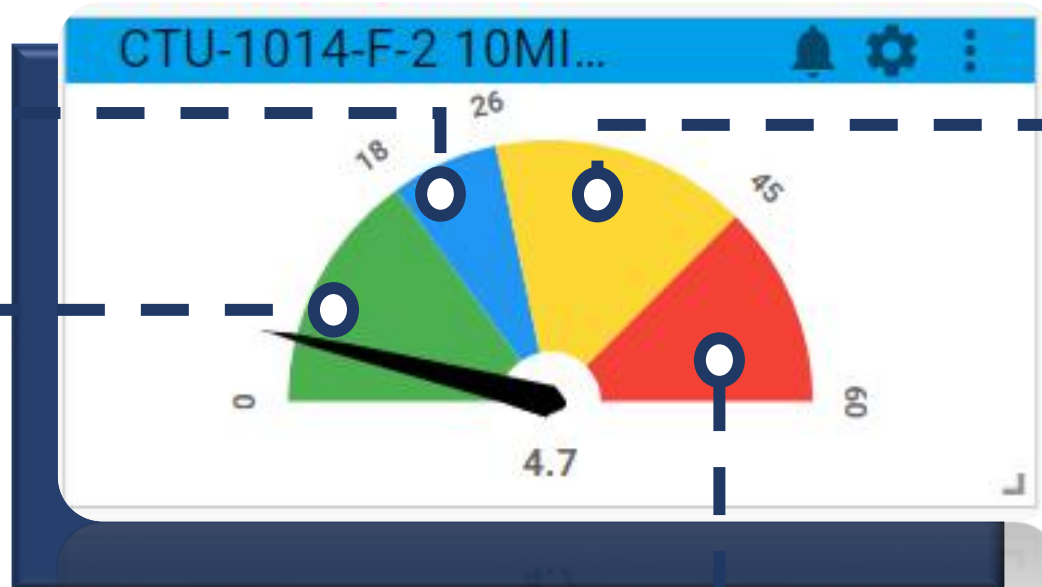
8dB above baseline
indicates a **lack of
lubrication.**

BEGINNING OF
FAILURE

16dB above baseline
indicates damage to the
bearing – a **failure
mode beyond
lubrication alone.**

HEALTHY
BEARING

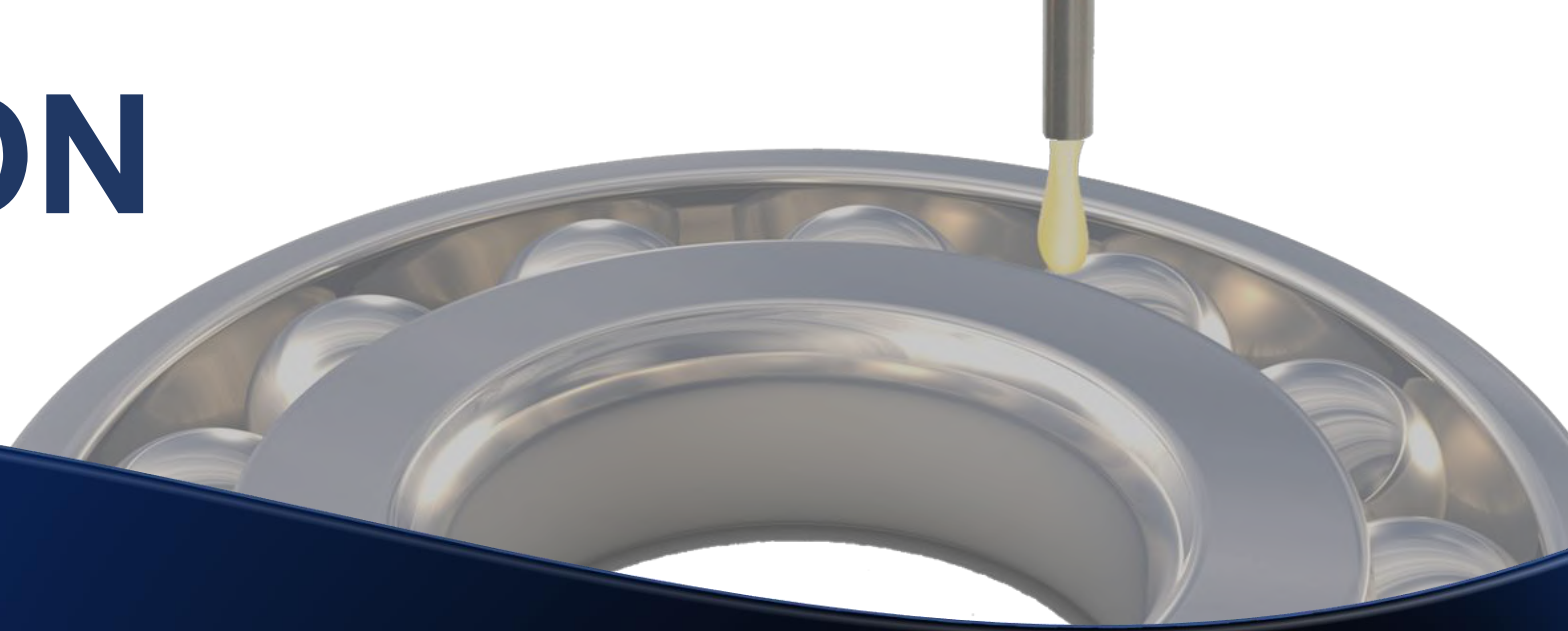
Do Nothing!



CLOSE TO FAILURE

35dB above baseline
means the asset is
critical – **it is close
to failure.**

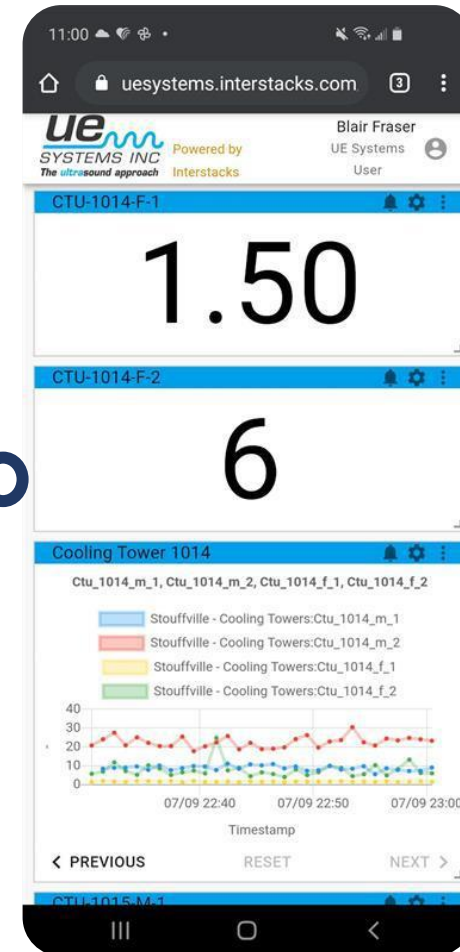
ULTRASOUND GUIDED LUBRICATION



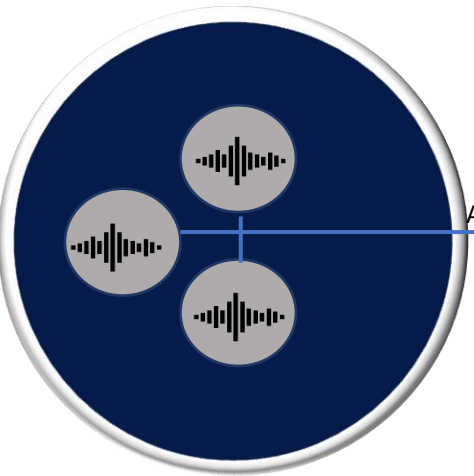
AS THE OPERATOR ADDS GREASE, HE OR SHE WILL NOTICE A GRADUAL DROP IN DECIBELS. ONCE THE LEVEL FALLS BACK TO THE BASELINE, **THE BEARING IS SUFFICIENTLY LUBRICATED.**

MANUAL ULTRASOUND GUIDED

LUBRICATION



LUBRICATION



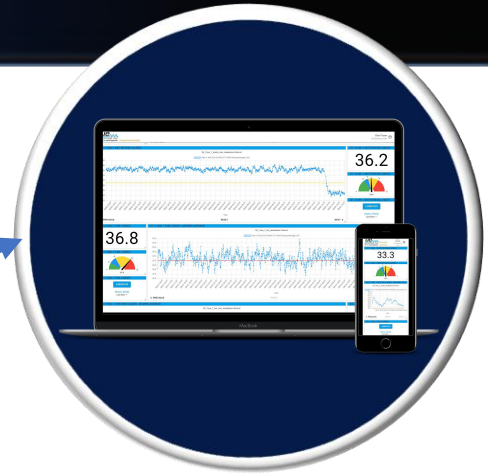
**ULTRA-TRAK 750
ULTRASOUND SENSORS**

ANALOG



ONTRAK SMART LUBE
PRECONFIGURED WITH 16 CHANNELS. CONNECT TO THE UE INSIGHTS CLOUD OR OTHER APPLICATIONS WITH WI-FI, CELL OR ETHERNET

ETHERNET, WI-FI, CELLULAR



UE INSIGHTS
VIEW SENSOR DATA AND CONTROL LUBRICATION ON ANY LAPTOP, TABLET AND PHONE. USE REAL-TIME INSIGHTS TO MONITOR LUBRICATION & CONDITION INSIGHTS.

BLUETOOTH LOW ENERGY



AUTO LUBER
BLUETOOTH-ENABLED AUTOMATIC LUBRICATOR. LUBRICATE BEARINGS WITH PRECISION, ANY WHERE AT ANY TIME.

REMOTE ULTRASOUND GUIDED

LUBRICATION



- Lubricate any where, anytime
- Remaining grease level
- Warning alerts
 - Excessive Backpressure
 - Low Battery
 - End of Lube Cycle
 - No. of days since End of Lube Cycle
 - Replacement Cartridge Date



BEARING LUBRICATION CERTAINTY

