



WE'VE GOT YOU  
COVERED!

# UE 4Cast

## Bearing Condition Monitoring System

Save time, save your bearings and improve plant reliability

### Review bearing information from the convenience of your office

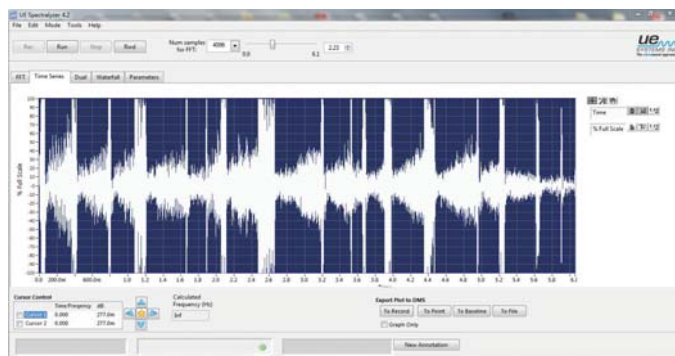
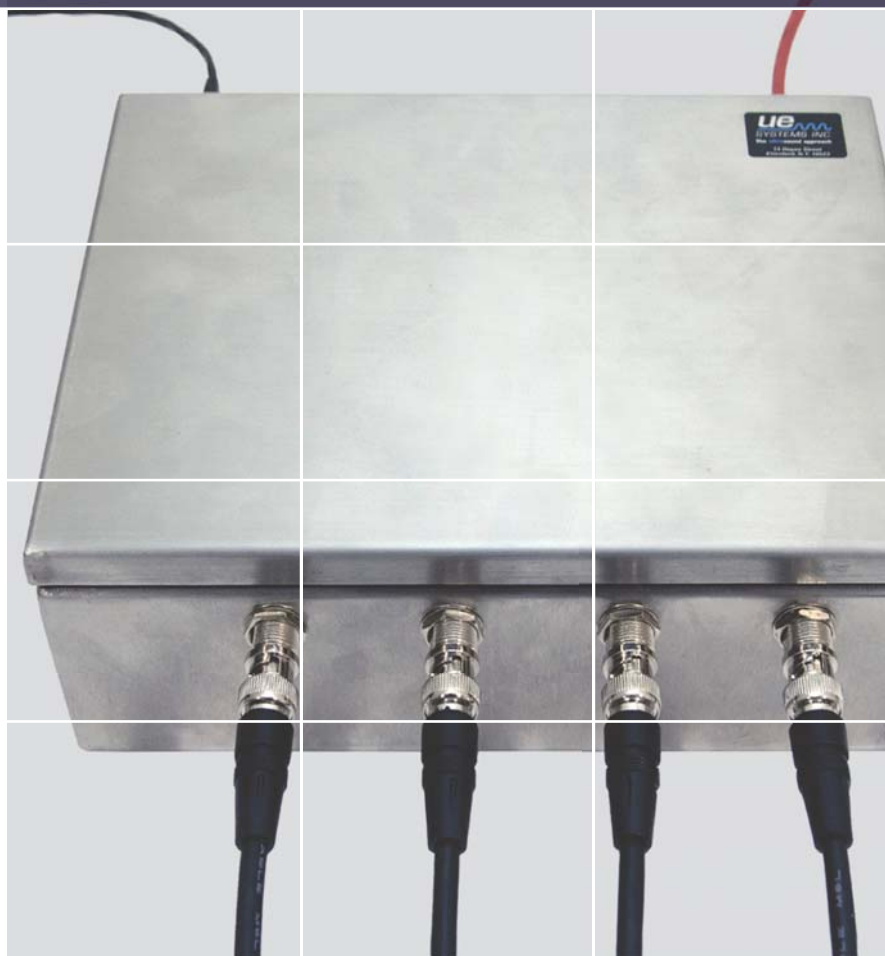
Monitor bearing condition 24/7 and tell 4Cast when to send a report.

This unique, system continuously logs bearing data and bearing sounds. At pre-set intervals, all stored data and sound samples are sent to a computer for reporting and analysis.

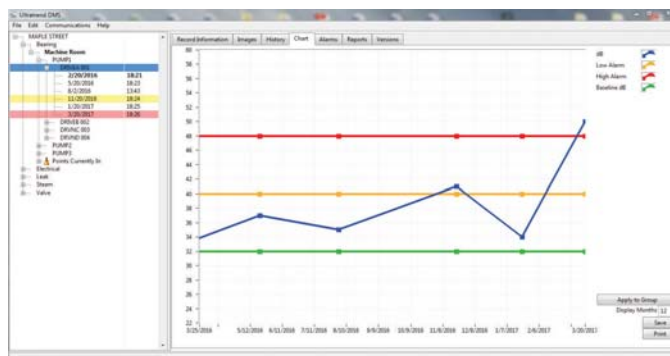
How often do you want 4Cast to sample a bearing? System flexibility allows users to pre-set how often a bearing will be tested: by the minute, hour, day, etc.

### Customize your report intervals

Data and sound recording transfer rates are customizable so that while the data are routinely recorded on the 4Cast box, a report containing only the latest information will be sent to Ultratrend DMS (UE Systems data management analysis and reporting program) via your existing Ethernet network. Reporting frequency can be set by the user (for example, once a week, month or year).



UE SPECTRALYZER™ - Spectral Analysis Software (Time Series tab screenshot)



ULTRATREND DMS™ - Data Management Program (Chart screenshot)



## Set your alarm levels

Alarm levels can be set to provide a low alarm and a high alarm.

## Analyze how and why the alarm went off

1. When a set alarm level is reached or exceeded, the system will send previously logged data and recorded sounds directly to Ultratrend DMS for review.
2. After an alarm has been addressed, all data and sound recordings stored during the alarm period can be set to transfer to the computer for more detailed analysis and reporting.

Each 4Cast box monitors up to four bearings.



## Specifications

<b>Case</b>	Stainless Steel; Dimensions: 9"x6"x3" (22.8cm x 15.24cm x 7.62cm) Weight: 4.7 lbs. (2.1 kg)
<b>Power input</b>	24V, 1 amp (conditioned)
<b>Circuitry</b>	Solid State Analog and SMD Digital with temperature compensation and true RMS conversion
<b>Frequency Response</b>	20kHz-100 kHz Centered around 30 kHz
<b>Response time</b>	<10ms
<b>Operating Temperature</b>	32°F - 122°F / 0°C - 50°C
<b>Transducer Cable</b>	RAS piezoelectric, stainless steel housing BNC out to BNC in (length: 25' / 7.62 m, can be ordered up to 100 feet / 30,48 m)
<b>Transducer Mount</b>	thread: female10/32
<b>Software</b>	Ultratrend DMS 6.0 or higher



UE 4Cast opened box circuits



[www.uesystems.com](http://www.uesystems.com)

MASTER DISTRIBUTER:  
**Ultra-Tek Pty Ltd**



**A:** Unit 5 / 2-4 Maiella Street  
Stapylton QLD 4207

**T:** 0400 709 800

**E:** [info@ultra-tek.com.au](mailto:info@ultra-tek.com.au)

**W:** [www.ultra-tek.com.au](http://www.ultra-tek.com.au)

UE Systems Inc. • 14 Hayes St. • Elmsford, New York • USA 10523

T: +1 914 592 1220 • E: [info@uesystems.com](mailto:info@uesystems.com) • [www.uesystems.com](http://www.uesystems.com)



©UE Systems, Inc. Made in U.S.A.

UE 1 - 1208